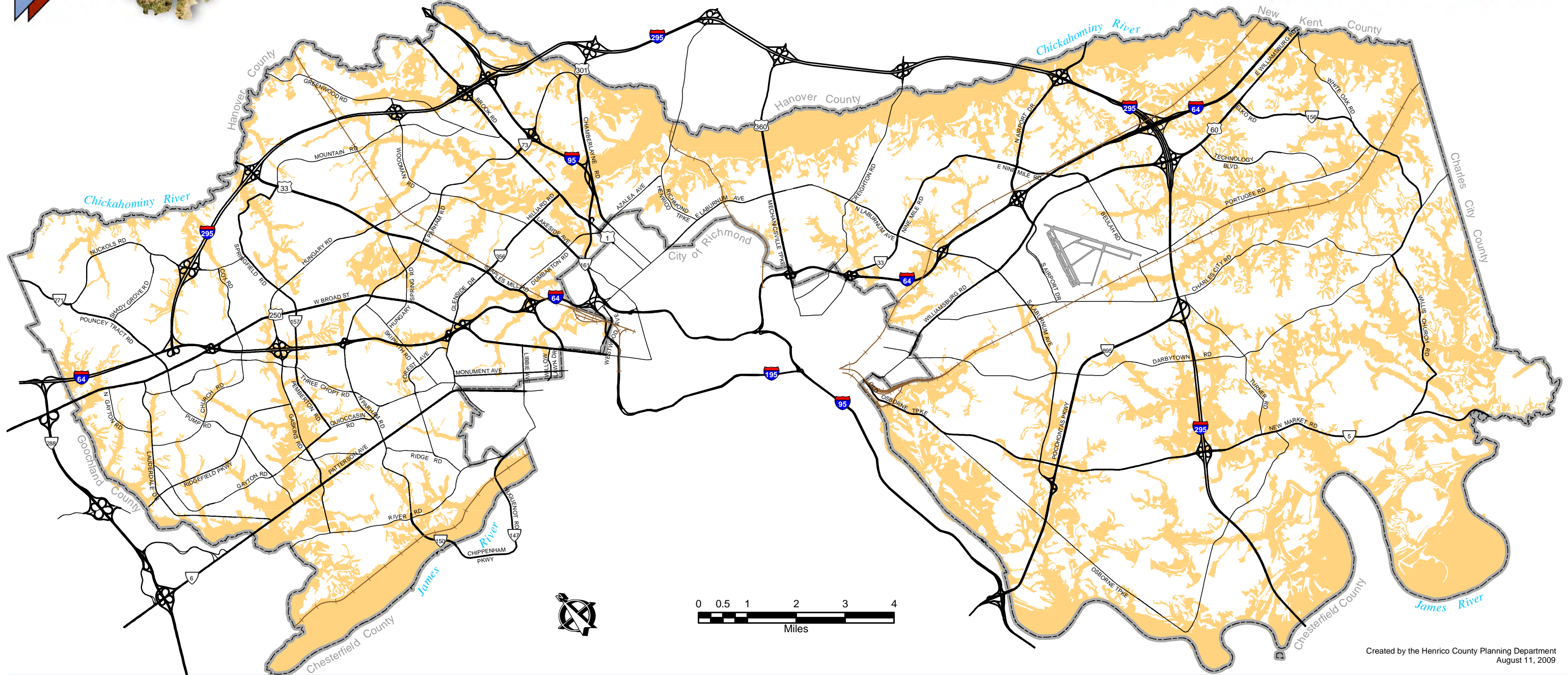


# HENRICO COUNTY Vision 2026



*Proud of our progress; Excited about our future.*



Created by the Henrico County Planning Department  
August 11, 2009

 Chesapeake Bay Resource Area

Note: Includes both Resources Management Areas and Resource Protection Areas.

DISCLAIMER: THIS IS NOT AN OFFICIAL MAP

This map is based upon map sources which are imprecise and do not reflect the full extent of current conditions in every respect. This map should be considered as general information only. A field determination is REQUIRED to accurately locate Chesapeake Bay Preservation and Management Areas on individual lots, parcels or specified areas of land. The Department of Public Works should be consulted for the appropriate process for field verification of these features.

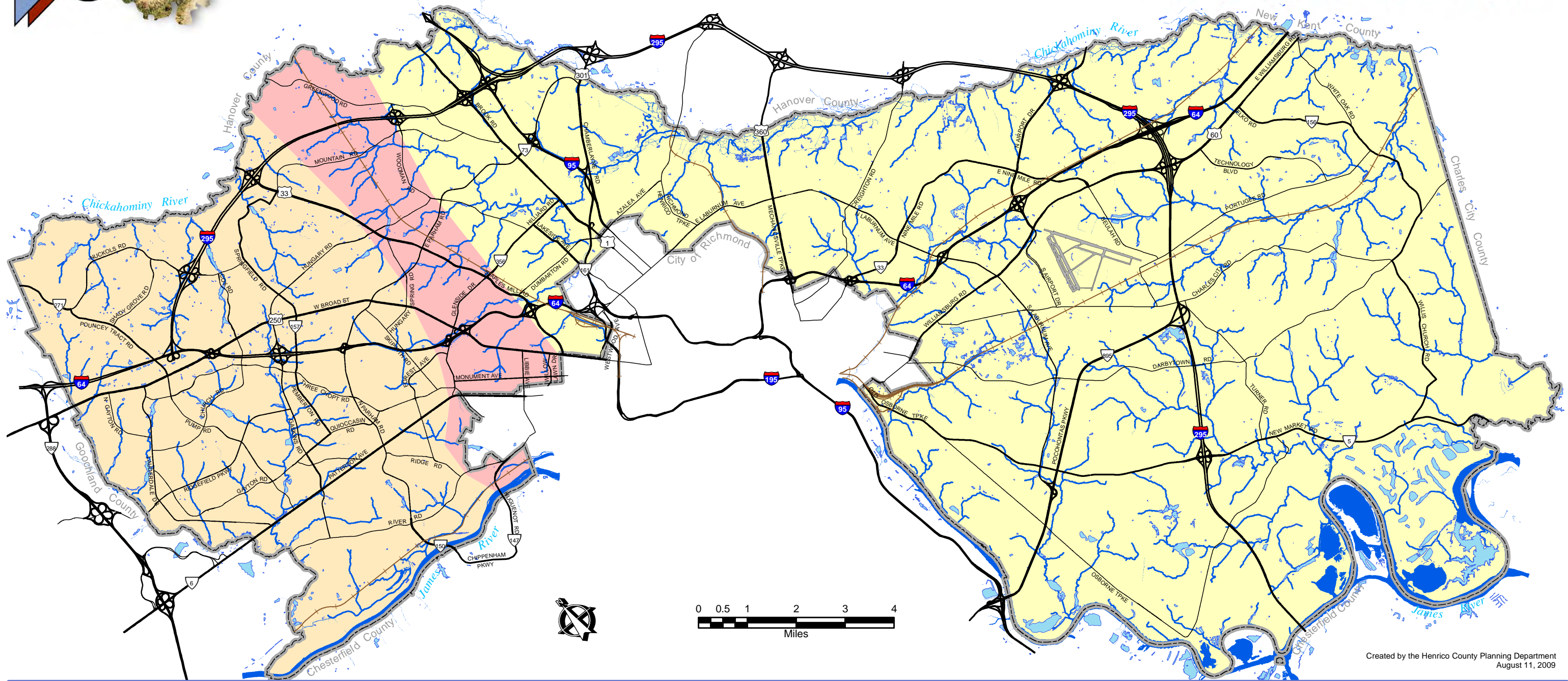
## Chesapeake Bay Resource Areas

# HENRICO COUNTY

## Vision 2026



*Proud of our progress; Excited about our future.*



Created by the Henrico County Planning Department  
August 11, 2009

- Coastal Plain Province
- Fall Zone
- Piedmont Province
- Rivers and Streams
- Ponds, Lakes, Reservoirs

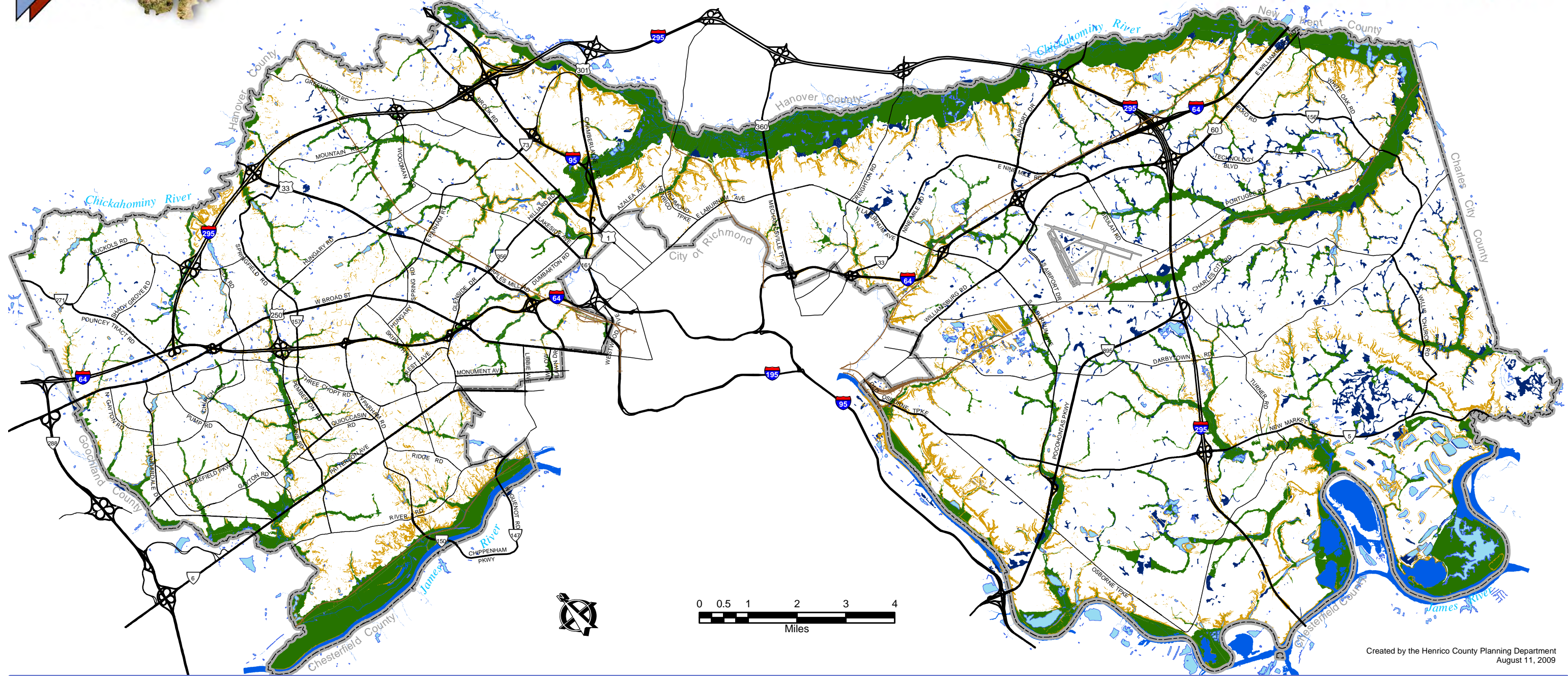
# Physiographic Provinces

# HENRICO COUNTY

## Vision 2026



*Proud of our progress; Excited about our future.*



Created by the Henrico County Planning Department  
August 11, 2009

- Wetlands Only
- Floodzones
- Slope over 15%
- Ponds, Lakes, Reservoirs
- Rivers and Streams

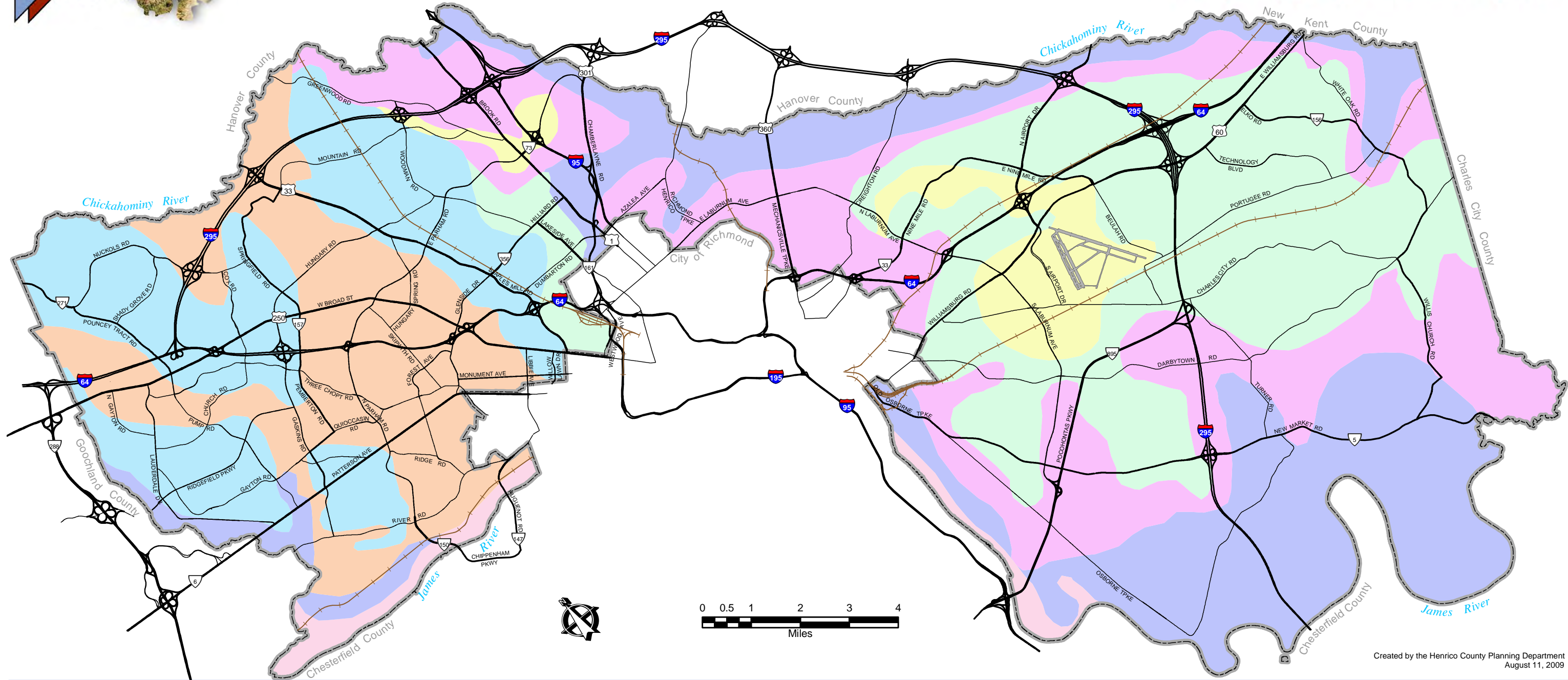
# Physical Constraints to Development

# HENRICO COUNTY

## Vision 2026



*Proud of our progress; Excited about our future.*



Created by the Henrico County Planning Department  
August 11, 2009

- |   |  |
|---|--|
|  Angie-Pamunkey-Lenoir     |  Kempsville-Atlee-Duplin            |
|  Appling-Wedowee-State     |  Lynchburg-Rains-Coxville           |
|  Chewacla-Riverview-Toccoa |  Ochrepts & Udults-Norfolk-Caroline |
|  Colfax-Helen-Borne        |  |

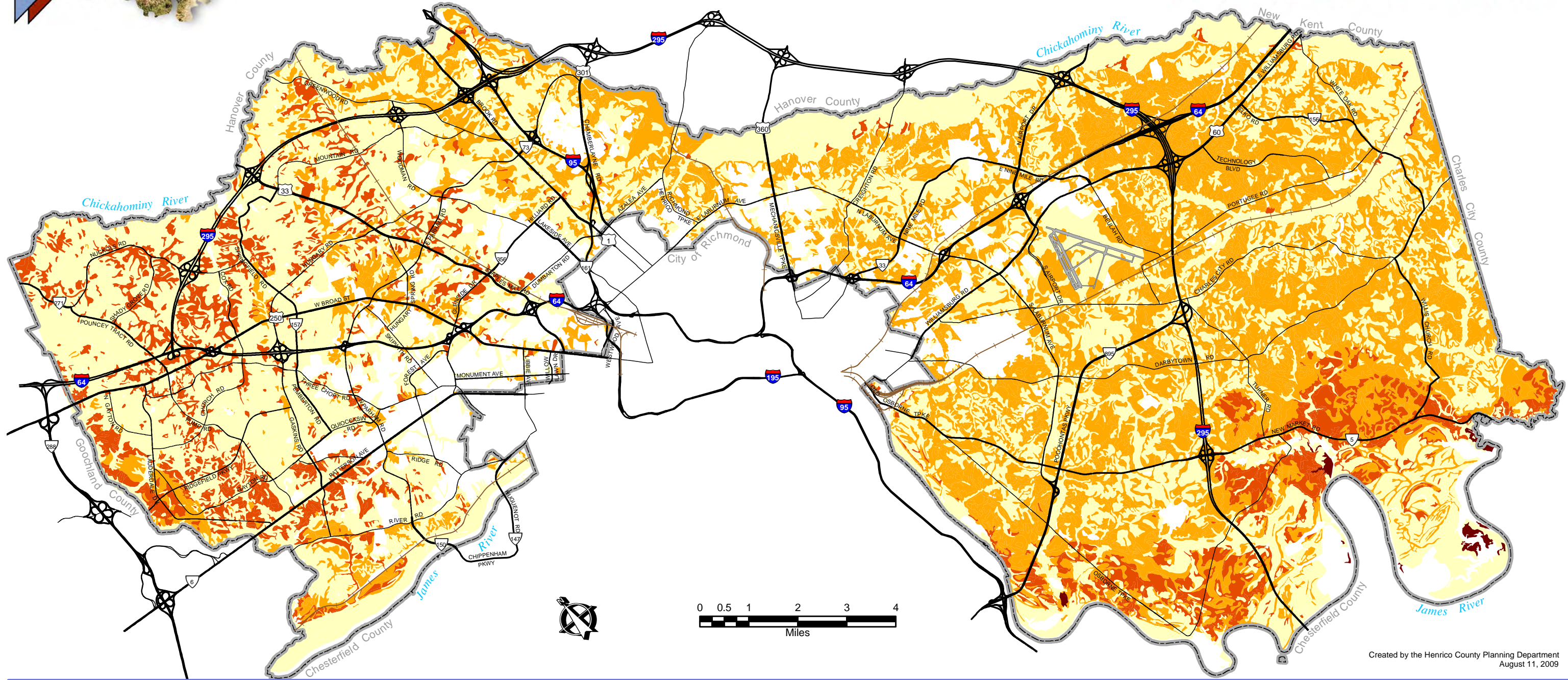
**DISCLAIMER:**  
Each area outlined on this map consists of more than one kind of soil. The map is intended for general planning purposes rather than a basis for decisions on the use of a specific parcel of land. The detailed soil map on file with the County should be used to determine the specific soil characteristics of a parcel of land.

# General Soil Associations



# HENRICO COUNTY Vision 2026

*Proud of our progress; Excited about our future.*



Created by the Henrico County Planning Department  
August 11, 2009

### Shrink-Swell Potential

- Not Classified
- Low
- Moderate
- High
- Very High

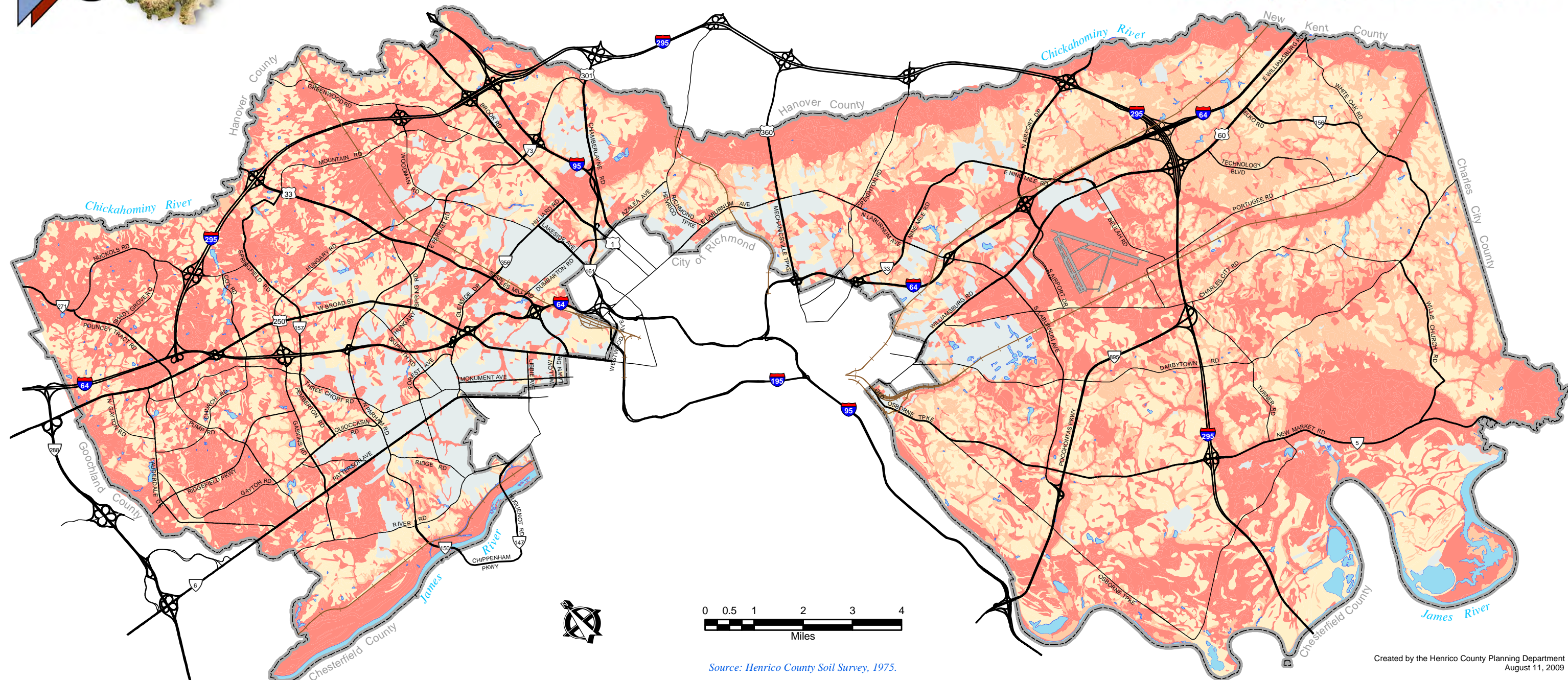
# Shrink-Swell Soils



# HENRICO COUNTY

## Vision 2026

*Proud of our progress; Excited about our future.*



Source: Henrico County Soil Survey, 1975.

Created by the Henrico County Planning Department  
August 11, 2009

- Not Limited
- Not Rated
- Somewhat Limited
- Very Limited
- Water

# Soil Suitability for Septic





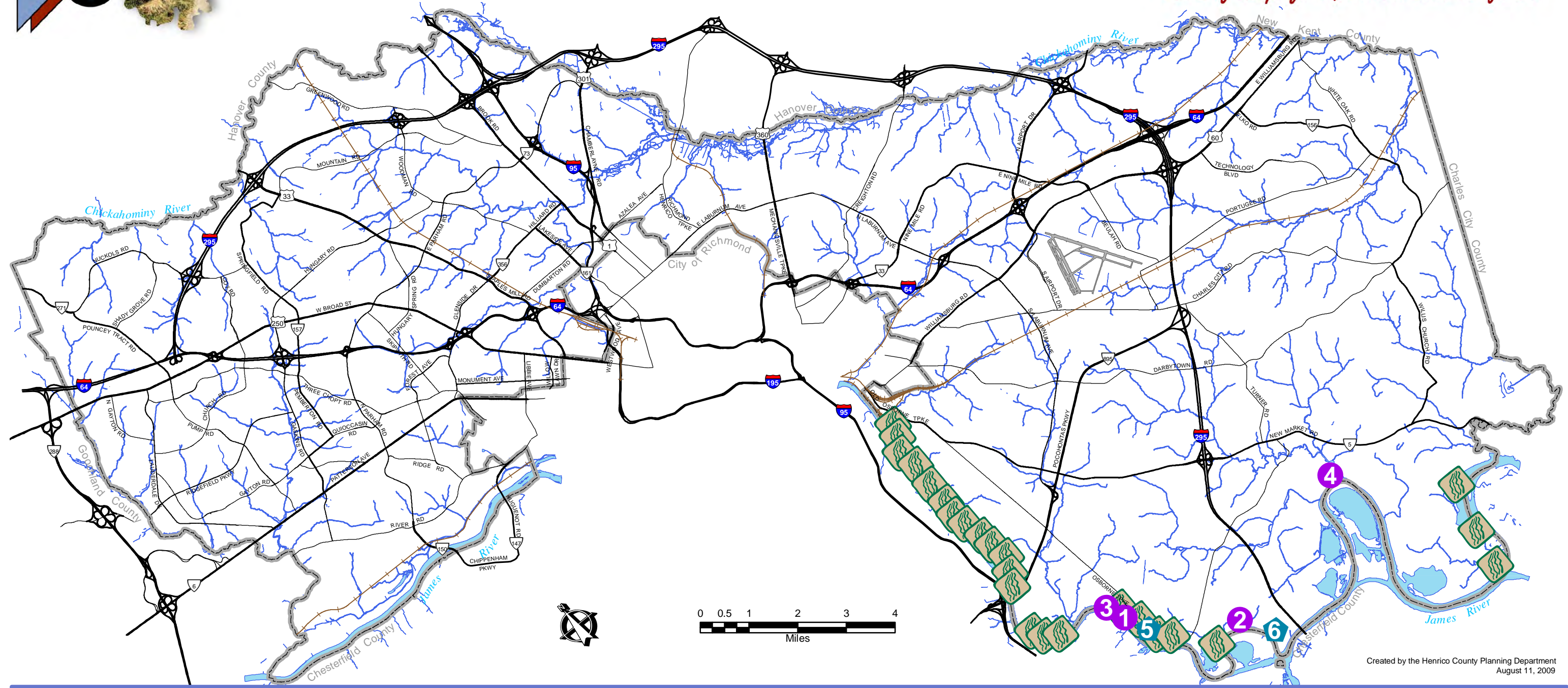


# HENRICO COUNTY

## Vision 2026



*Proud of our progress; Excited about our future.*



Created by the Henrico County Planning Department  
August 11, 2009

Shoreline Erosion

**Existing Boat Ramps**

Public

Private

**KEY**

1. Osborne Pike Landing
2. Richmond National Battlefield Park, Fort Brady
3. Osborne Park
4. Deep Bottom Boat Landing
5. Kingsland Reach Marina
6. Richmond Yacht Basin

**DISCLAIMER:**  
The areas of shoreline erosion are the general areas identified in the 1985 Shoreline Situation Report, as having 2 feet or more of erosion per year. This map should be used for general planning purposes only.

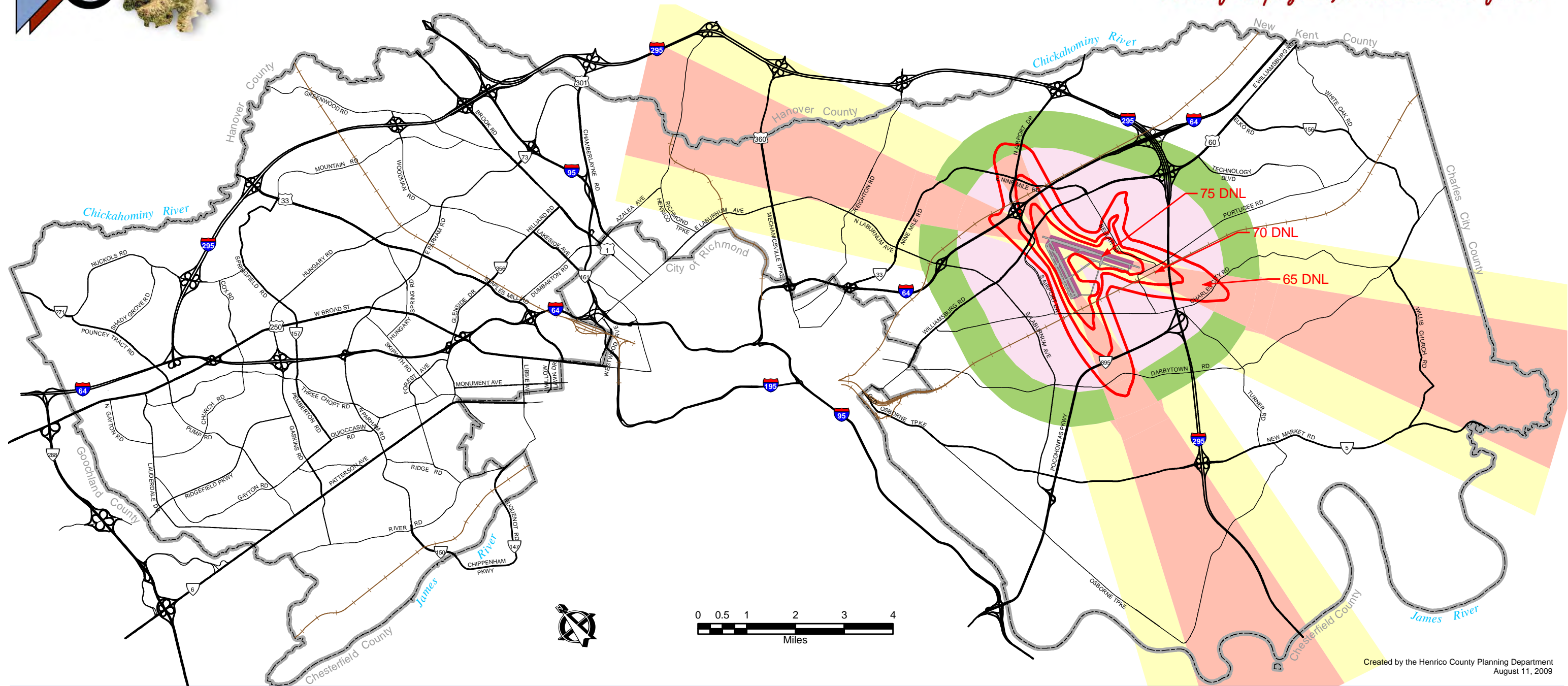
# Waterfront Access

# HENRICO COUNTY

## Vision 2026



*Proud of our progress; Excited about our future.*



Created by the Henrico County Planning Department  
August 11, 2009

- Approach
- Conical
- Horizontal
- Day-Night Average Sound Level Contours
- Primary
- Transitional

## Richmond International Airport Overlay District and Noise Exposure Contours